

ECHO H2800Xi

Commercial Heat Recovery Ventilator - Indoor Unit



STANDARD FEATURES

- Up to 2800 cfm
- EC Motors
- Premium aluminum cell
- Dual service door & Reversible electrical box
- Push-push configuration
- External electrical box
- MERV13 (supply) and Merv8 filters (exhaust)
- Low voltage contacts
- Slanted Full length drain pan
- Outdoor ducts on the same side
- Pre-programmed wall control with remote display
- Communication via Modbus and BACnet available.

OPTIONS

- By-Pass Module (BPM1434) for recirculation
- EDF 34-14 Damper



Job Name:		
Job Location:		
Job Reference Number:		
Unit Reference Number:		
Engineer:		
Distributor:		
Contractor:		
For Reference:	For Approval:	For Construction:
Submitted by:		Date:
Address:		
Tel:	Fax:	Email:
Notes:		

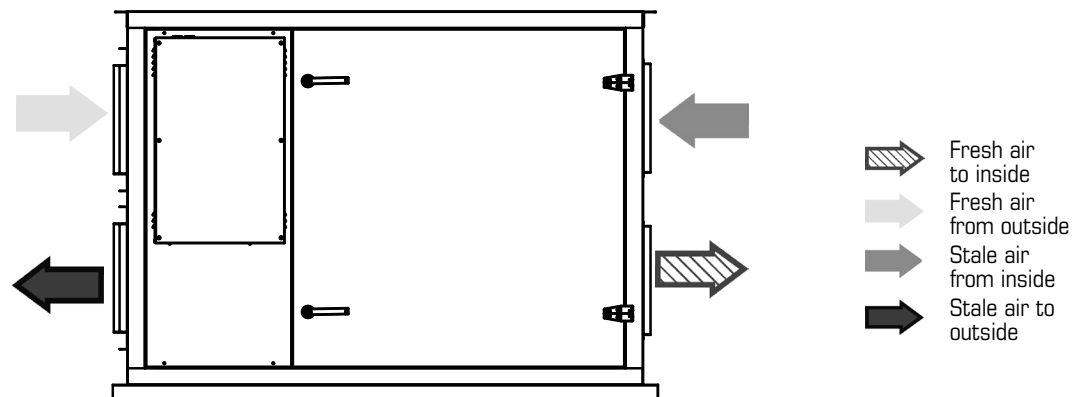
United States 10048 Industrial Blvd. • Lenexa, KS 66215 • 1.800.747.1762 • www.fantech.net
Canada 50 Kanafkakt Way • Bouctouche, NB E4S 3M5 • 1.800.565.3548 • www.fantech.net

Fantech reserves the right to make technical changes.
For updated documentation please refer to www.fantech.net



Descriptions

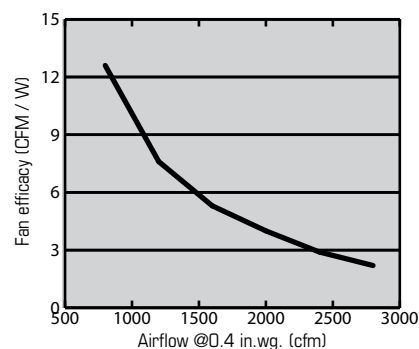
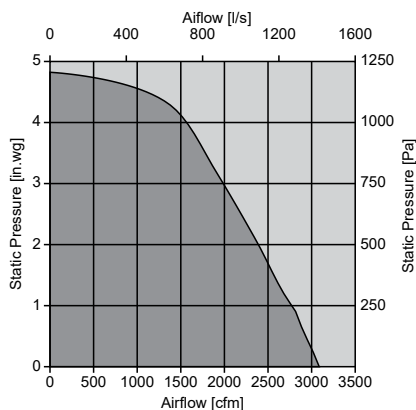
Cabinet:	Double wall construction with 22gauge galvanized pre-painted steel corrosion resistant. Insulated with 2" (50 mm) fiberglass for condensation control.
Blowers:	Two (2) high efficiency EC (electronically commutated) motors. EC motors use intelligent technology with integral electronic controls to ensure energy saving no matter what the airflow demands. Reduced energy usage results in lower operating costs
Heat recovery core:	The heat recovery cores are fixed plate cross-flow heat exchanger using 1100 alloy aluminum and capable of transferring sensible heat between air streams. The heat recovery cores are engineered with a turbulence inducing geometry in order to maximize heat transfer while allowing an effective evacuation of condensate. The plates are hemmed to avoid cross-contamination of airstreams. The three (3) cores are 23.6" x 23.6" (600 x 600 mm) with a 15.6" (397 mm) depth each.
Filters:	The air streams are protected by a MERV13 pleated filter on the supply air and a MERV8 pleated filter on the exhaust air. Filter dimensions are 24" x 24" (610 mm x 610 mm).
Controls:	Factory installed and pre-programmed controller with remote display for monitoring and configuring the HRV. Communication via Modbus and BACnet.
Frost control:	A preset frost control sequence is initiated if the outdoor temperature falls below the set point of 23°F (-5°C). During the initial stage, the supply blower shuts down & the exhaust blower switches into high speed to eliminate frost buildup in the core. The unit then returns to normal operation for the final stage of the frost control sequence at which time the sequence is repeated if the outdoor air temperatures is still below the set point.
Serviceability:	Cores, filters and drain pan can be accessed easily from both sides of the unit from hinged and removable access doors. Cores conveniently slide out and blowers can be accessed from both side of the HRV from fastened access panels. Blowers are easily removable by taking off the access panel. A clearance of 44" (1120 mm) is required to service the unit.
Mounting:	Unit may be suspended by using threaded rod, not supplied, or placed on a platform. Unit shall be adaptable for easy service of electrical components.
Warranty:	Fantech HRV's have a warranty that is limited to 3 years on all parts from the date of purchase, including parts replaced during this time period. If there is no proof of purchase available, the date associated with the serial number will be used for the beginning of the warranty period



Specifications

- Volts: 200 - 240V
- Phase: Single
- Amperage: 12.2 Amps Total
- Blowers (each blower): 230V, 60Hz, 5.8 Amps
- Weight: 850 Lbs (386 Kg)
- Shipping Weight: 900 Lbs (480 Kg)
- Shipping Dim.: 79 5/8" x 54 7/8" x 58 3/4"
(2023 x 1393 x 1444 mm)

Ventilation Performance



Energy performance

Airflow cfm	Heating – 35 °F (1.7°C) - Effectiveness			Cooling – 95°F (35°C) - Effectiveness		
	Sensible %	Latent %	Total %	Sensible %	Latent %	Total %
2400	71	0	47	68	0	26
2250	71	0	47	69	0	26
1800	71	0	47	72	0	27
1600	72	0	47	73	0	28

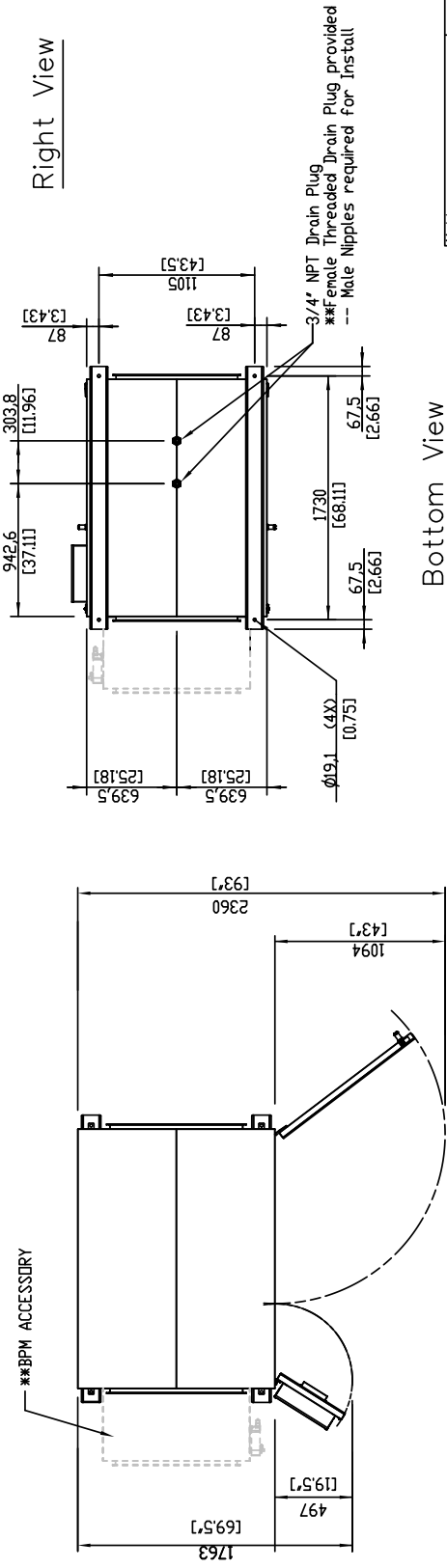
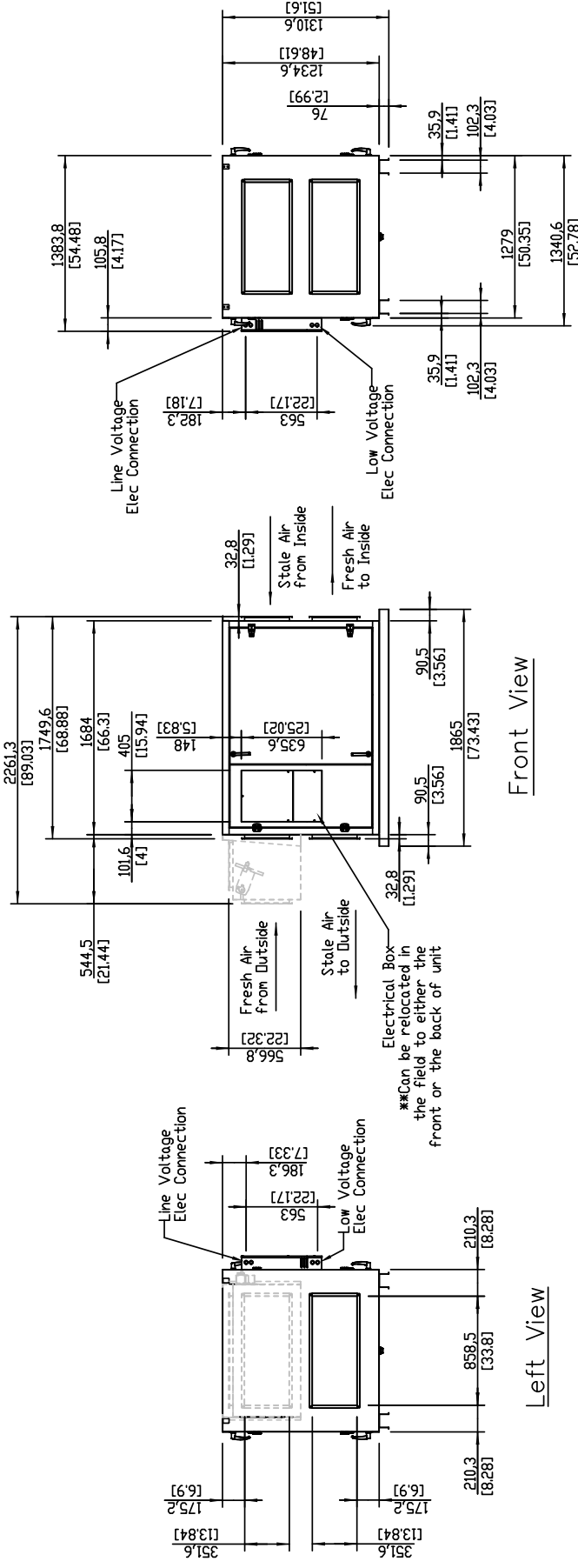
Requirements and standards

- Complies with the UL 1812 requirements regulating the construction and installation of Heat Recovery Ventilators
- Complies with the CSA C22.2 no. 113 Standard applicable to ventilators
- Technical data was obtained from published results of test relating to AHRI 1060 Standards

United States 10048 Industrial Blvd. • Lenexa, KS 66215 • 1.800.747.1762 • www.fantech.net
Canada 50 Kanalfakt Way • Bouctouche, NB E4S 3M5 • 1.800.565.3548 • www.fantech.net

Fantech reserves the right to make technical changes.
 For updated documentation please refer to www.fantech.net

****Nominal Duct Sizes: 14" x 34"**



Top View
Access Panel Clearance



fantech

Model: E2800Xi / H2800Xi NTS E400010 Dec2016