

# **A Passion for Protection**

A Resource Guide for Radon Mitigators





## Because your choice matters

### Leading the way in Radon mitigation product technology

Radon exposure is not the same everywhere. One house can have radon levels next to zero while the house next door can have levels that are off the charts. As your region, building structure and radon mitigation methods differ so do products intended for these specific applications. Knowing how to choose the right product is important: it will determine how effective your radon mitigation solution is at reducing exposure to Radon.

#### Pioneering a better process

In focusing our efforts on a better product line for Radon, we have taken performance and efficiencies into consideration by adding models driven by energy-efficient EC motors and the first radon-specific couplings to our product offering. Our LDVI couplings are designed to be leak-free with low vibration and provide for a quality installation that reduces noise and proves itself as a customized, preferred option for the radon industry. Pair that with the efficiencies of EC motors and you have a superior mitigated system.

#### Benefits of Rn 2EC and Rn 4EC fans



##### Longevity

Longer lifespan than their traditional AC counterparts



##### More Power, Less Energy

Considerably less use of energy than alternatives available on the market. Mitigate at home with as low as 5 Watt



##### Quietness

Produce less ambient sound



##### Less Vibration and Heat

Built-in motors do not generate excessive heat and vibration resulting in quiet operation and longer lifespan

We successfully lowered the radon levels on a hard-to-fix house using the Rn4EC. We were able to double the pressure readings under the slab, and with the special couplings the Rn4EC was as quiet as any other high suction fan on the market.

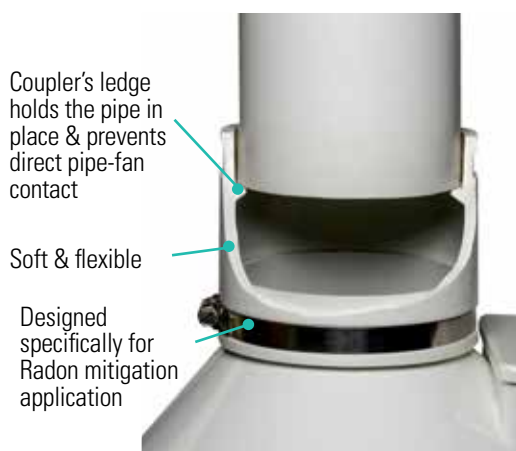
**David Grammer, RAdat**  
Flanders, NJ

# The Easier, More Accurate Way to Optimize Radon Mitigation Systems



## Pressure Field Extension Diagnostic Kit (95916)

- Measure, analyze and select the right fan the first time
- Confidently and scientifically can say you have used the best fan for the job
- Instant credibility that separates you from competitors
- Don't have to go back and replace an undersized fan
- No more guessing
- Eliminate the potential for oversizing a fan for the job
- Know the complexity of the system in advance will help you
- Use data and graphs for record keeping
- Operational cost savings for the homeowner



## FRIK Install Kits

95904 FRIK 4x3 Rn Installation Kit

95905 FRIK 4x4 Rn Installation Kit

95906 FRIK 6x3 Rn Installation Kit

95907 FRIK 6x4 Rn Installation Kit

44965 FRIK SL Radon Install Kit



FRIK Installation Kit simplifies your radon fan installation job. The couplers help make a radon active soil depressurization (ASD) system installation quieter by providing superior vibration isolation.

## Radon Alarm (498290 US/498298 Canada)

Provide an extra measure of protection with our new radon alarm.



- Visual and audible alert
- Low battery notification
- 7 day snooze function
- Mitigator configurable:
  - 24 or 96 hour delay function
  - Audible enable/disable function
- Teach/test function
- Direct mount to 3", 4", 6" PVC pipe; no need for connection tubes
- Foam mounting tape provides an airtight seal at installation point
- Easy and fast installation
- Pressure limits:
  - Low: 0.04" W.C.
  - High: 10" W.C.



## Rn 1

- For low suction, low flow applications
- For good sub-slab communication
- Electrical installation quick and simple
- ENERGY STAR® listed



## Rn 2

- For medium suction, low flow applications
- For moderate sub-slab communication



## Rn 2X & Rn 3

- For medium suction, medium flow applications
- For elevated Radon levels and poor communication
- Multiple suction points and/or large sub slab footprint



## Rn 2SL

- For medium suction, low flow applications
- For moderate sub-slab communication
- Sealed housing with built-in condensation bypass
- Housing blends with outdoor utility boxes



## Rn 2EC

- Dial your suction in with a built-in speed control
- For medium suction, low flow applications
- For moderate sub-slab communication
- Energy efficient when dialed to optimal flow and suction






## Rn 4EC

- Dial your suction in with a built-in speed control
- For high suction, high flow applications
- For elevated Radon levels and poor communication
- Multiple suction points and/or large sub slab footprint
- Energy efficient when dialed to optimal flow and suction

# Cross Reference / Replacement Guide<sup>1,2</sup>

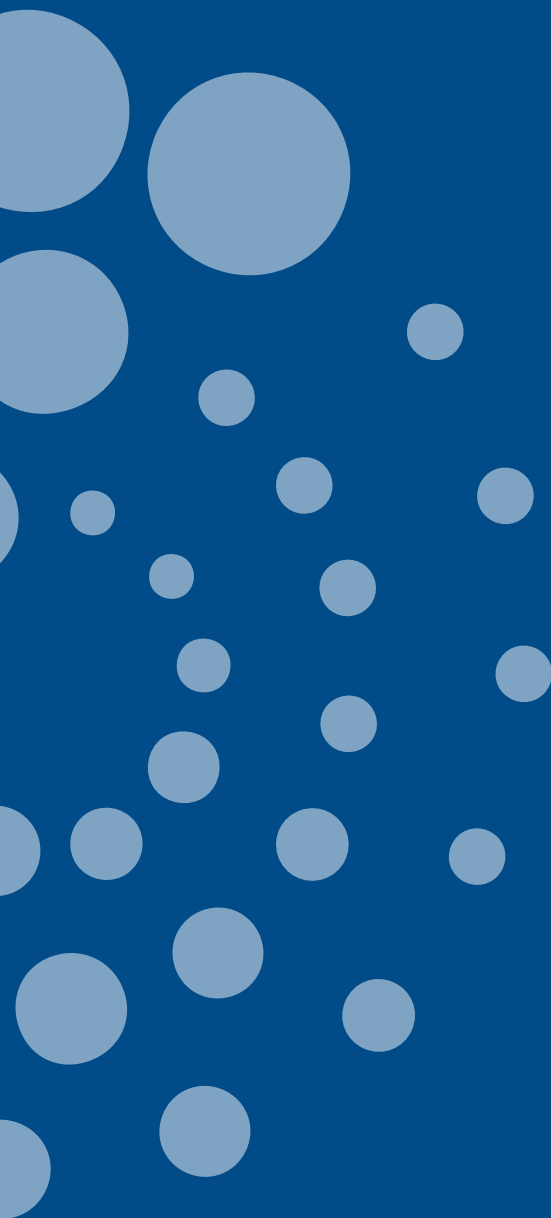
We know you have options. By simplifying our line of products we aim to make your choice easier while still providing the selection you need for the work at hand. For more detailed information on our fan systems, visit [fantech.net/Rn](https://fantech.net/Rn) or give us a call at **800-747-1762 (USA)** or **800-565-3548 (Canada)**.

Item Number	Name	Application Pressure Range (in w.c)	Max Static Pressure (in w.c)	Max Power (W)	Max CFM	Fantech	RadonAway	AMG/Festa
89051	Rn 1	0.0 - 0.8	0.9	20	158	HP 2133 FR 100	RP140	Spirit
89052	Rn 2	0.0 - 1.8	2.0	59	174	HP 2190/Q HP 190 HP 175	RP145, RP260 XP151, XP201 XR261 GP201	Maverick Hawk
99927	 Rn 2EC	0.0 - 1.8	2.0	52	173	HP 2190/Q HP 190 HP 175	No match	No match
89054	Rn 2SL Slimline	0.0 - 2.0	2.1	87	159	HP 190SLQ	SF180	Patriot
498100	Rn 2X	0.0 - 1.6	1.7	66	316	FR 150	No match	No match
89053	Rn 3	0.0 - 2.2	2.6	125	337	HP 220 FR 150 FR 160	RP265 RP380 GP301	Legend Prowler
99922	 Rn 4EC-3 <sup>3</sup>	0.0 - 4.35	4.75	173	216	FR 200 FR 225 FR 250	No match	No match
99923	 Rn 4EC-4 <sup>3</sup>	0.0 - 4.35	4.75	174	330	FR 200 FR 225 FR 250	No match	No match

<sup>1</sup> Fan substitution/replacement based on pressure capability; pipe/connection sizes vary, and may require size transition couplings.

<sup>2</sup> Referenced models are indicated for the Fantech model covering the majority of its application range. If the referenced model is being utilized at the upper end of its performance capability, the next larger Fantech model might be necessary as a replacement.

<sup>3</sup> 99922 shipped with 3" LDVI couplers; 99923 shipped with 4" LDVI couplers



**Customer Support:**

**USA** 800.747.1762 • [USsupport@fantech.net](mailto:USsupport@fantech.net)

**CANADA** 800.565.3548 • [CANADAsupport@fantech.net](mailto:CANADAsupport@fantech.net)

**Distributed Locally by:**

Systemair Inc. reserves the right to modify, at any time and without notice, any or all of its products' features, designs, components and specifications to maintain their technological leadership position.

Zephyr Creative • January 2025 • E1989