

# Ventilation Solutions

## Laundries





# DPV22-2

Something different than a dryer booster.

Item #: 75104

If your Dryer Exhaust Solution isn't using a DPV22-2, then odds are that it isn't adhering to a code specifically designated for dryer exhaust. Show customers that their home meets all safety standards in your region by installing a DPV22-2 Duct Power Ventilator.

**DPV22-2**  
Up To 125'  
Duct Length  
10 lbs



# Switch to the real deal.

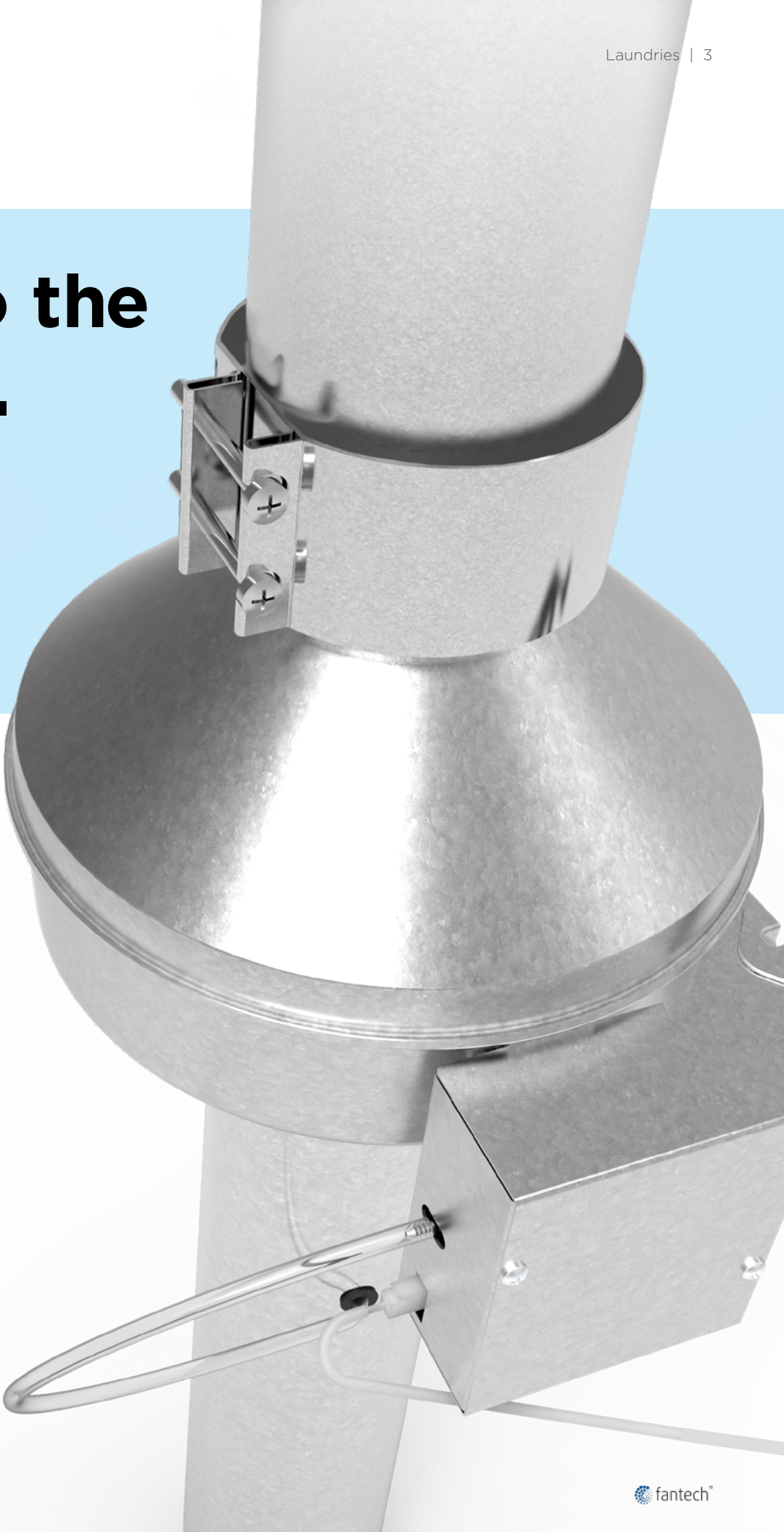
Adhering to CSA22.2 No. 113 and designed exclusively for electric and gas dryer exhaust.

**DPV22-2**  
A.K.A. The Real Deal



CERTIFIED BY CSA TO THE  
DPV REQUIREMENTS OF  
CSA22.2 No. 113

Can be used with gas or  
electric dryers



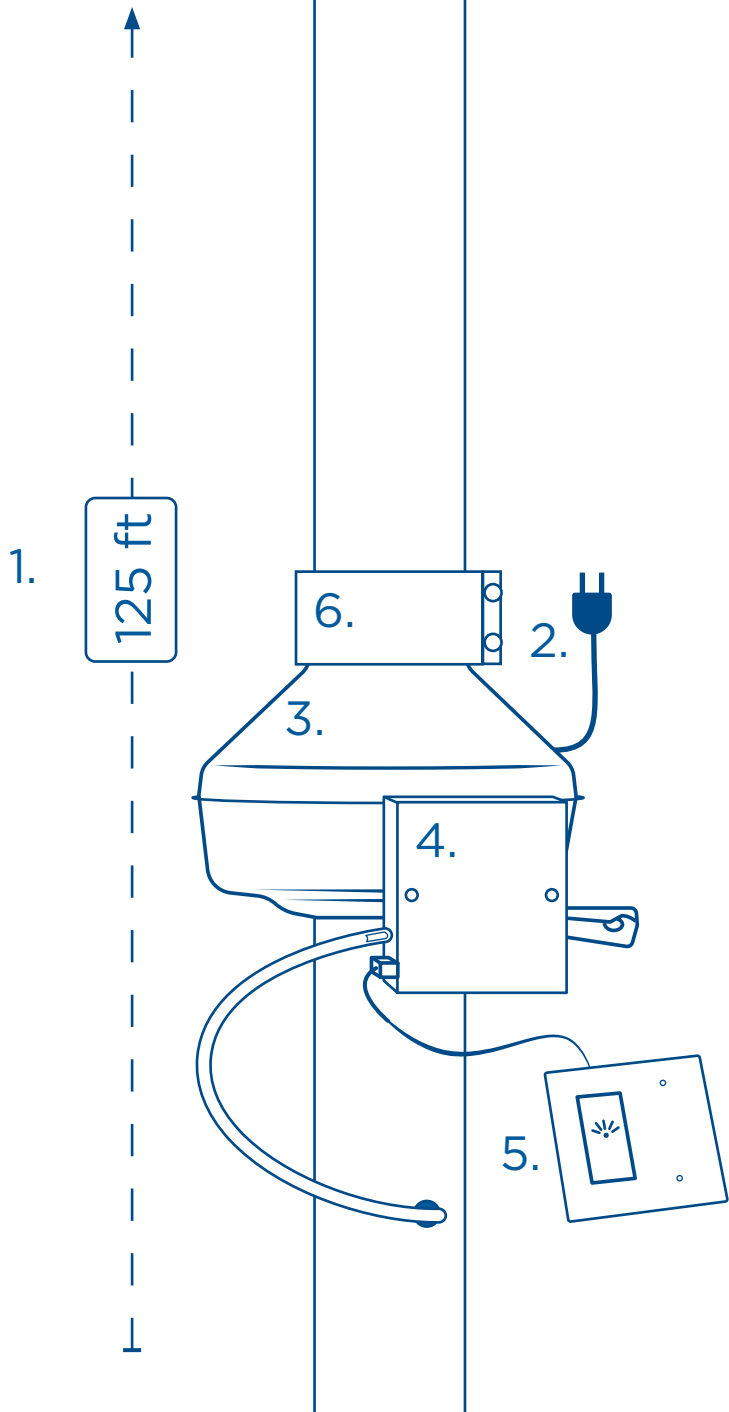


# Extraordinary

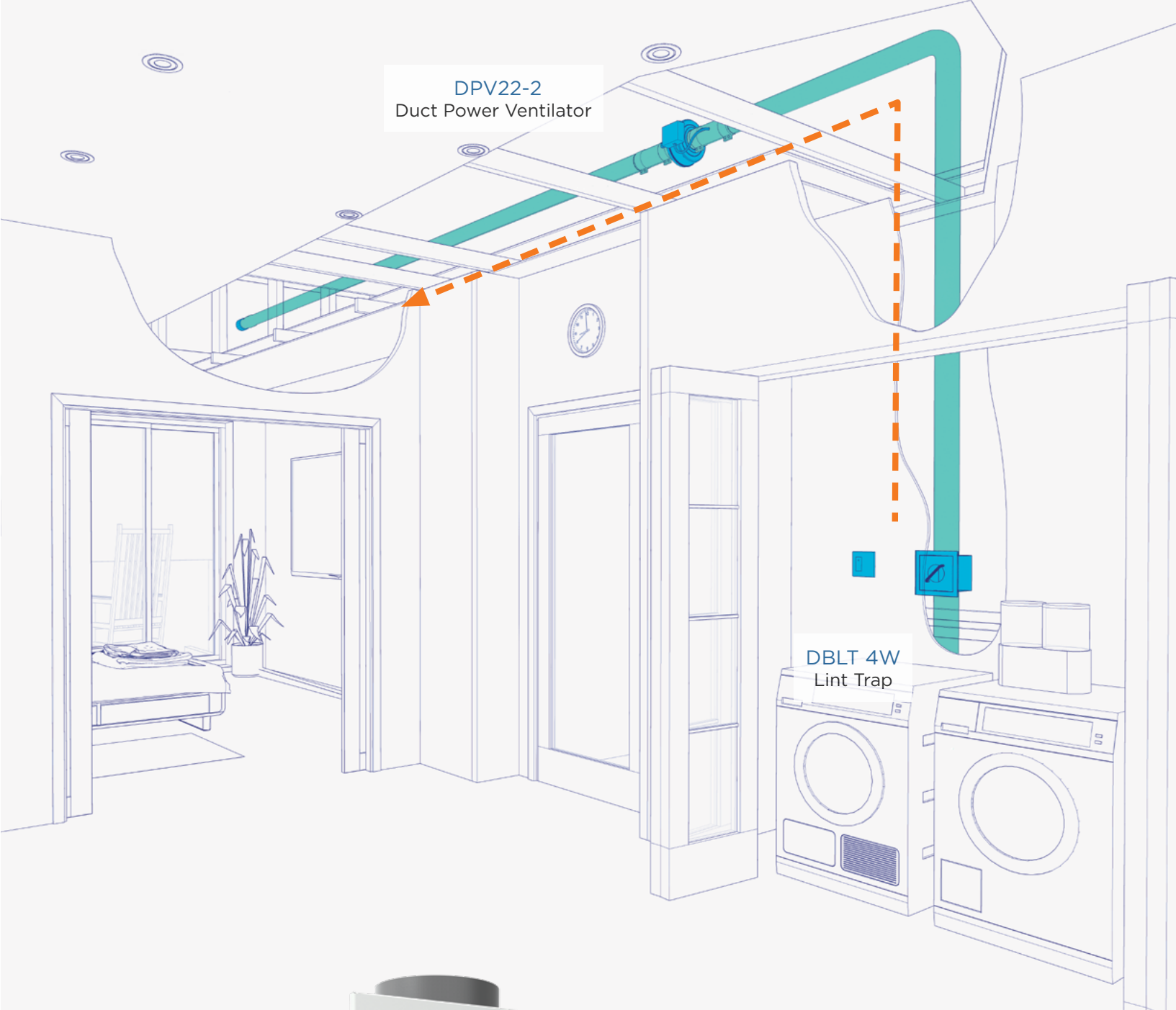
Safety and Maintenance are Easy with DPV22-2

DPV22-2 allows you to confidently protect your client’s home from the risks associated with lint in long duct runs.

- 1. Supports lengths of duct up to 125 feet (38.1 m).
- 2. 5 foot (1.5 m) power cord/120v
- 3. Our DPV fan housings is metal, in accordance to building codes.
- 4. Our DPV automatically energizes when the dryer is operated. Our DPV also automatically turns off in the case of a fire.
- 5. Our DPV indicates proper fan operation, via indicator panel, to the dryer operator as well as notifying the dryer operator in the event of a fan failure.
- 6. The included FC 4 Mounting Clamps (#411295) makes for simple install and maintenance. It reduces noise and vibration and it’s easy to remove for cleaning.



Underwriters Laboratories (UL) has developed a supplement to UL705 specifically for fans used for dryer exhaust and has given these fans the name: Duct Power Ventilator (DEDPV). Fantech’s DPV22-2 is CSA22.2 No. 113 listed for Gas & Electric Dryers



## Go the extra mile

No matter how you’re mitigating dryer exhaust, we recommend going an extra mile with the secondary lint trap in addition to annual maintenance on your dryer exhaust run.

**DBLT 4W**  
Lint Trap

# The Duke

## with Fantech Dryer Exhaust

Story by Acton Ostry Architects; [see the full project here](#).

In recent years, the City of Vancouver introduced housing policies to address current and future needs for housing affordability and choice in the ever-evolving urban environment. The new policies allow strategically located sites to be rezoned to permit greater height and density in exchange for developers committing to provide and operate rental housing for a period of 60 years or for the life of the building. The Duke responds to these challenges with a new rental building typology inspired by precedents from England.

The Duke is a 14-storey mixed-use development with 12-storeys of residential rental accommodation located above a two-storey commercial podium. The unit mix comprises of 25% two-bedroom family units with one-bedroom and studio units making up the balance.

To achieve economic viability as a rental development, the project had to achieve a relatively high density within a 14-storey height limit imposed by the City. Use of a typical double-loaded corridor form of development set back from the lot lines could not realize the density required for economic viability. To achieve the required density, the living units are pushed out to the lot lines, thereby accommodating a greater number of units on the site. Positioning the units at the perimeter of the site created a figure/ground plan configuration with a void at the centre that was developed as a soaring open-air circulation space to access the units. A high-tensile steel and Teflon membrane structure is suspended above the open-air atrium to protect the space from the elements, with portions extending past the void to shelter portions of the extensive rooftop communal terrace.

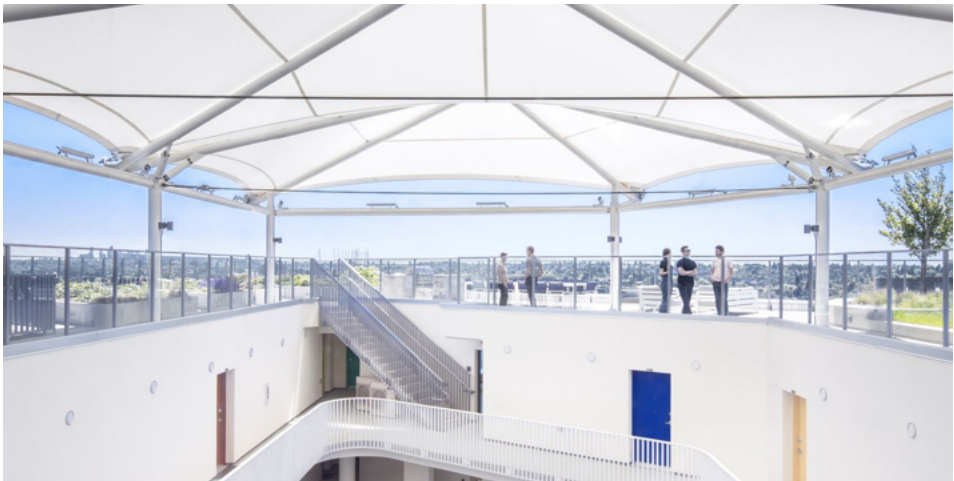


The trapezoidal shape of the site creates a dynamic spatial quality to the atrium that is further enhanced through the play of multi-coloured entrance doors against a backdrop of white finish surfaces. A narrow, vertical south-facing slot provides glimpses into and out of the atrium space; while an 18-metre high, pink-coloured hanging art installation washes

shafts of coloured light into the brilliant white atrium. Three communal outdoor landscaped terraces span the sunlit slot to stimulate impromptu social interactions between residents. Two amenity rooms are located on the uppermost floors with direct stair access to the rooftop terrace amenities that includes a children's play zone, urban agriculture, a dog-friendly space, and social seating with a barbeque area.

The rental units are oriented outward, with a staggered elevational treatment that reflects the shifting nature of the traffic pattern passing by on the adjacent arterial thoroughfare. The building has a robust character and quality that features masonry cladding with steel and glass finishes. Studio units have shallow 'Juliet' balconies, while larger family units feature larger projecting balconies.

Photos by Michael Elkan



The overwhelmingly positive response from residents suggest that The Duke may have set an important precedent – one likely to be followed by many future developments in Vancouver.

With so many units, it is imperative to the safety and longevity of the building to use laundry exhaust products. Plus,

finding a laundry exhaust solution that is CSA certified would ensure the product is third-party verified for safety.

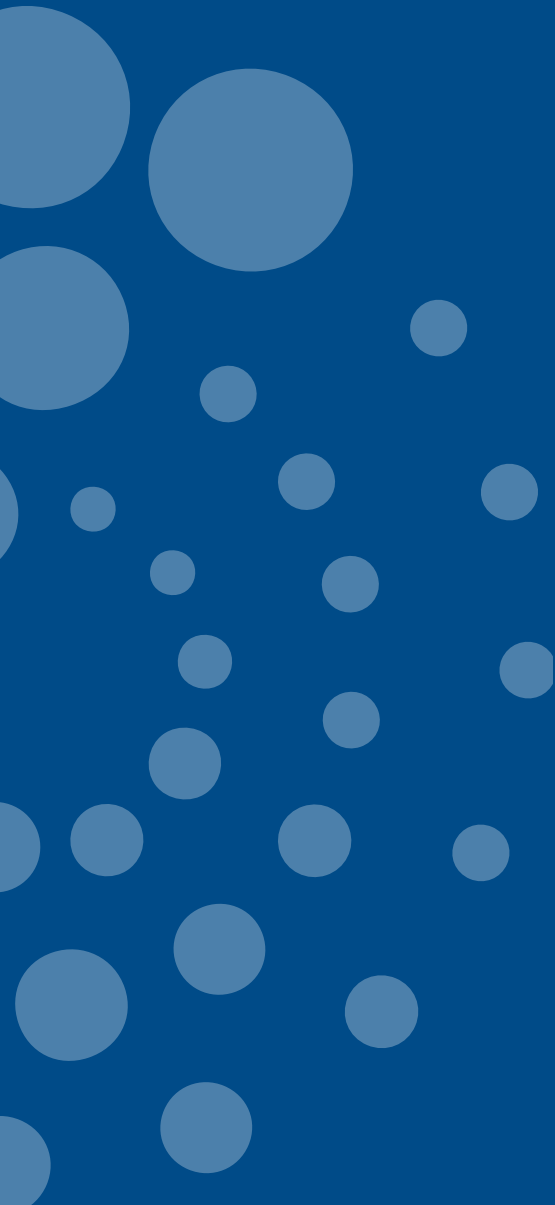
Therefore, the engineers went with Fantech's DPV22-2 duct power ventilator for each unit's laundry room. Units with longer than recommended dryer duct runs (+35 feet) are required by most fire codes to use a DPV22-2. This product is specifically engineered to satisfy the safety standards of CSA C22-2 (General requirements – Canadian Electrical Code, Part II). With these products, the builder owner and residents can rest assured their risk of a dryer fire is significantly reduced.



Photos by Michael Elkan



Photos by Michael Elkan



**Customer Support:**  
**CANADA** 800.565.3548 • [CANADAsupport@fantech.net](mailto:CANADAsupport@fantech.net)

**Distributed Locally by:**

Systemair Inc. reserves the right to modify, at any time and without notice, any or all of its products' features, designs, components and specifications to maintain their technological leadership position. The application rendering presented in this brochure is for a visual presentation purpose only. Please, contact a professional for technical guidance.

Zephyr Creative • August 2023 • E1641