

Installation Instructions — Ceiling Radiation Damper for bathfan Simple (SMPL) & bathfan Select Fit (SF)— EN/FR/ES



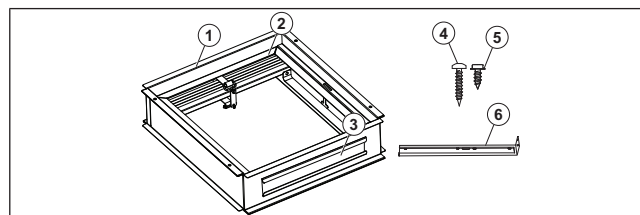
Warning

This product is intended for general ventilation use only. If you have questions, contact Fantech. To decrease the risk of fire, electric shock, or injury, read and obey the following warning instructions before you do work on the product:

- Because the product has rotating parts, exercise safety precautions when installing, operating, and maintaining the product.
- When installing the product, obey all applicable local conditions and laws, and fire-rated construction codes and standards.
- When cutting or drilling into walls or ceilings, watch for electrical wiring and other hidden utilities to prevent damage.
- Before installing, servicing, troubleshooting, or cleaning, set the product's electrical power supply source in the OFF position, and lock the service disconnecting means. If the service disconnecting means cannot be locked, attach a large warning device to the service panel.
- Do not clean the product with chemicals that can cause corrosion or water more than 60° Celsius (140° Fahrenheit).
- Do not let unwanted objects enter the product.
- When removing the old product from the ceiling, make sure that the product is held onto tightly to prevent injury.

Note:

The four (4) B and two (2) A mounting screws are not included with the damper assembly. Use the B and A screws provided with the bathfan SIMPLE/SELECT FIT products.



1. Radiation Damper Casing, quantity 1
2. Radiation Damper, quantity 1
3. Casing Channel
4. Hanger Bars, quantity 4 – 13–3/8 inch (340mm)
5. B Screw, quantity 4 – Self-tapping 1 inch (25mm)
6. A Screw, quantity 2 – Self-tapping 1/2 inch (13mm)
7. Cable Extender, quantity 1 (Not shown)
8. Grille Springs, quantity 2 (Not shown)

Fan Family	Fan Models	Model Numbers
bathfan Ceil. Radiation Damper (#484374) — bathfan Simple (SMPL) & bathfan Select Fit (SF)	• SMPL80	• #484300
	• SMPL80L	• #484301
	• SMPL100	• #484302
	• SMPL100L	• #484303
	• SF50–80–100	• #484305
	• SF50–80–100L	• #484306
	• SFC50–80–100	• #484307
	• SFC50–80–100H	• #484308
	• SFC50–80–100HO	• #484309
	• SFC50–80–100L	• #484310
	• SFC50–80–100LH	• #484311
	• SFC50–80–100LHO	• #484312

Note:

This radiation damper is UL classified for use in up to 3 hour rated floor/roof ceiling designs.

Note:

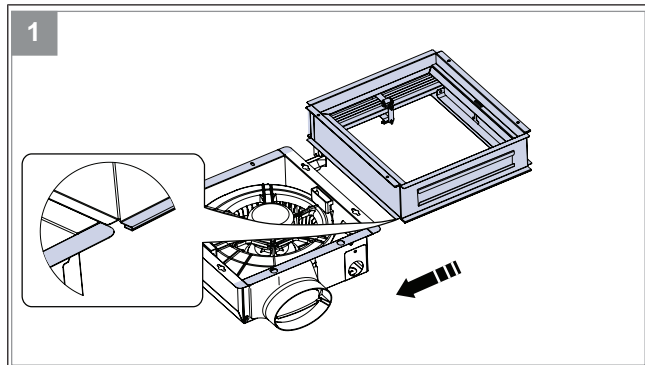
Before this product is mounted, make sure all personnel knows that installing the radiation damper will increase the size of this product. Adjust how this product is installed as specified in the applicable procedure.

To Install the Radiation Damper to the bathfan Simple (SMPL) and the bathfan Select Fit (SF) models

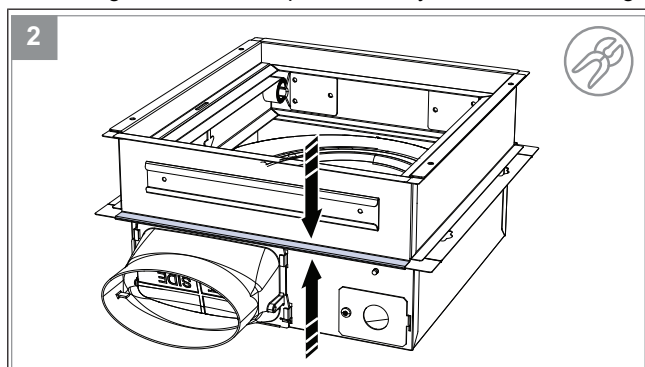
Note:

If necessary, fan may be hung using steel wires.

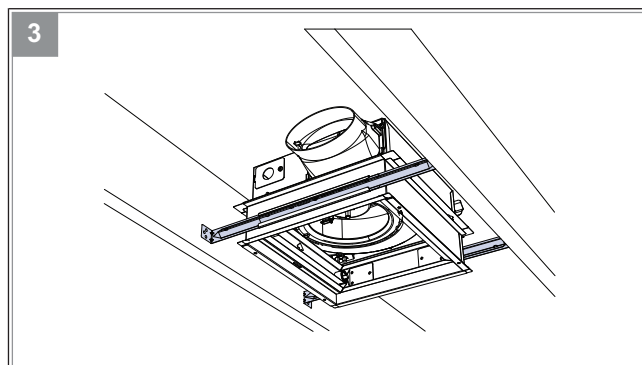
- 1 If the product has power, disconnect the power at the source.
- 2 Engage the hemmed edges of the damper assembly casing onto the exhaust fan's casing.



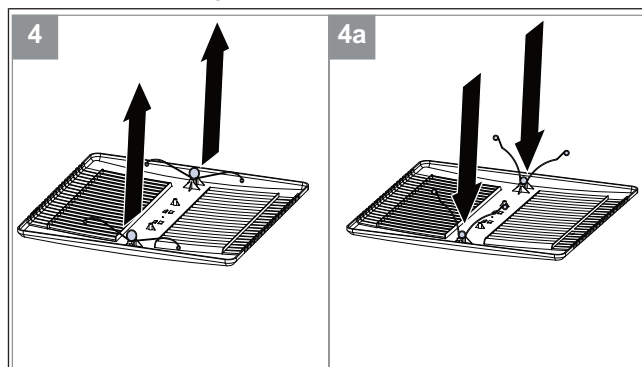
- 3 Crimp the hemmed edges on both sides of the damper casing to lock the damper assembly onto the fan casing.



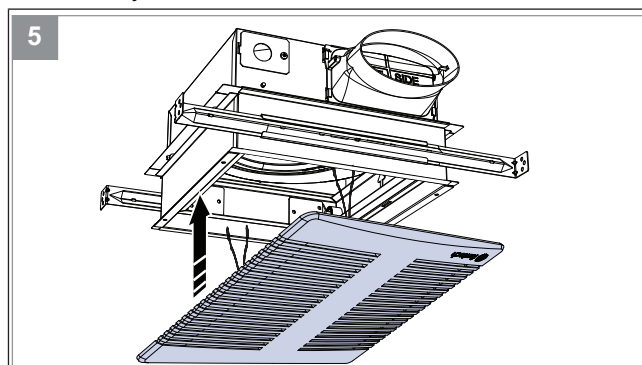
- 4 Remove the (4) screws that attach the radiation damper to the radiation damper casing.¹
- 5 Remove the radiation damper from the radiation damper casing.¹
- 6 Open the cable slot on the corner of the radiation damper casing.¹
- 7 Correctly attach the cable extender to the fan connection.¹
- 8 Insert the cable extender from the fan onto the slot.¹
- 9 Insert the occupancy cable from fan onto the slot.¹
- 10 Using the (4) removed screws, install the radiation damper back into the radiation damper casing.¹



- 11 Engage the (4) hanger bars onto the radiation damper casing through both casing channels.
- 12 Adjust hanger bars as necessary to mount the product between the framing.
- 13 Correctly align the hanger bar tabs with the ceiling joists so that the radiation damper assembly is flush with the bottom of the ceiling joists.
- 14 Using (4) B screws, attach both ends of each hanger bar to the ceiling joists.
- 15 Using (2) A screws, attach each hanger bar onto the product's casing.



- 16 Remove and discard (2) attached grille springs from the ceiling fan grille assembly.
- 17 Using (2) grille springs included with the damper assembly, attach (2) grille springs into the correct holes of the ceiling fan grille.
- 18 Correctly connect cables from the ceiling fan grille to the exhaust fan.¹
- 19 Align the ceiling fan grille with the casing of the product.
- 20 Push the ceiling fan grille into the casing of the product correctly.



¹ This step only applies to the bathfan products with a light/occupancy cable attached to the ceiling fan grille.

Fantech reserves the rights to alter their products without notice.
This also applies to products already ordered, as long as it does not
affect the previously agreed specifications.