

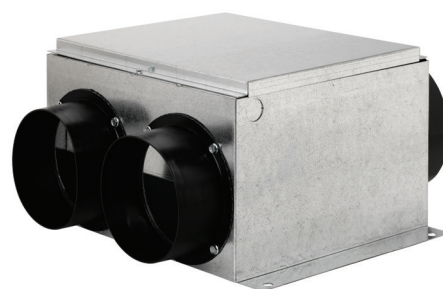
# CVS Series

## Multi-Port Centrifugal Fans

Fantech's CVS fans have been engineered for installation in areas where space is limited. They are a popular choice for use in areas between floors in apartment buildings or high rise office complexes. With Fantech's CVS models, several exhaust points connect into one centrally located fan without the use of adapters or transitions. The motorized impeller is both statically and dynamically balanced as one integral unit, for vibration free, quiet performance. With multiple exhaust points going into one fan, wall or roof penetrations are kept to a minimum. Choose from models with two or four ventilation points providing 245 CFM to 404 CFM of air movement.

### Easy installation

Fantech CVS fans are simple to install. Simply select the fan mounting location, taking into account the type of application, service accessibility, and distance from exhaust point (to minimize fan operating noise). Secure the unit using either threaded rod or wires to suspend the unit. Finally, connect the ductwork to inlet and outlet of the fan using CB or FC clamps or duct tape.

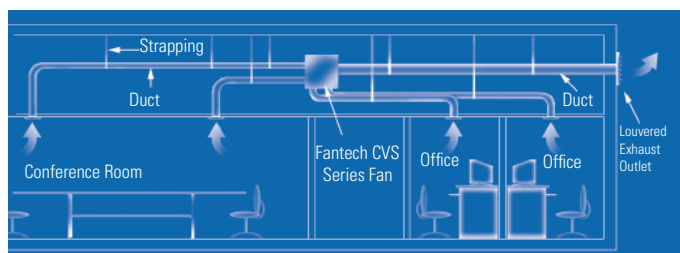


### Features and Benefits

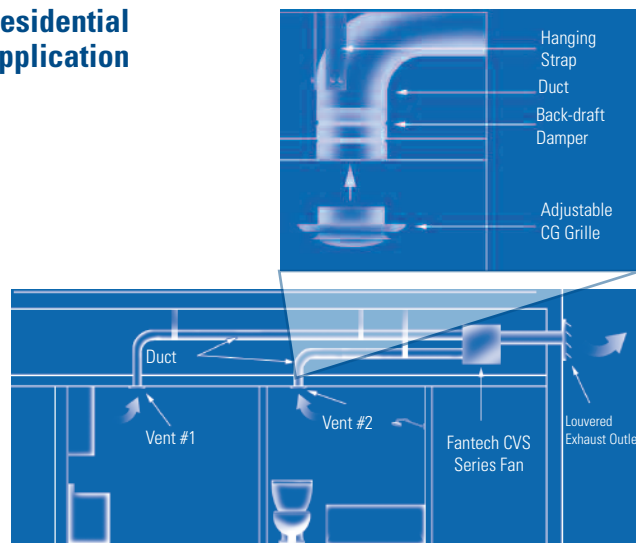
- 245 to 404 CFM
- Galvanized steel housing
- External rotor motor with backward-curved centrifugal fan wheel constructed of high-density polyamide, easily removable from housing for service without disturbing the installation
- Permanent split capacitor motors feature automatic reset thermal overload protection and sealed ball bearings for long life and maintenance-free operation
- Internal scroll for maximum air performance
- Well-designed inlet venturi for optimum efficiency
- Permanently lubricated sealed ball bearings
- 100% speed controllable for highly efficient and economical airflow
- Suitable for airstream temperatures of up to 140° F (60° C)
- CSA Certified
- 5 year warranty

### Applications

#### Commercial application



#### Residential application



## Specification Data

Model	Rated power	Voltage / phase	Max amps	RPM	0.0" P <sub>s</sub>	0.2" P <sub>s</sub>	0.4" P <sub>s</sub>	0.6" P <sub>s</sub>	0.8" P <sub>s</sub>	1.0" P <sub>s</sub>	1.5" P <sub>s</sub>	Max P <sub>s</sub>	Shipping weight	
	W	V / ~	A	min <sup>-1</sup>	cfm							in.wg	lbs	kg
CVS 275A CVS 275A-SI	92	120/1	0.79	2550	245	220	192	171	147	126	34	1.72	15	7
CVS 300A	123	120/1	1.07	2500	355	320	283	249	215	180	79	1.76	22	10
CVS 400A	156	120/1	1.41	2950	404	380	352	324	299	274	204	2.30	23	10

CVS Series performance is shown with ducted outlet. Per HVI's Certified rating program, charted air flow performance has been derated by a factor based on actual test results and the certified rate at 0.2 inches WG.

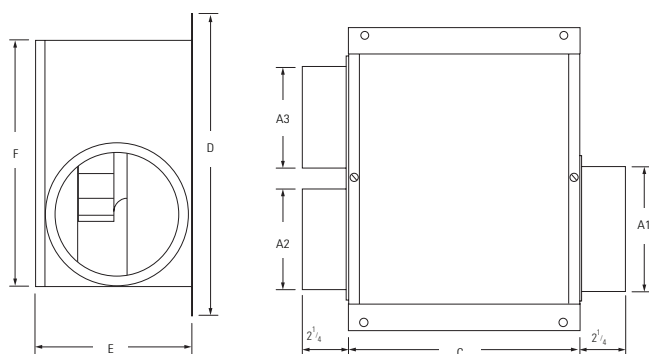
## Dimensions

Model	A1	A2	A3	C	D	E	F
CVS 275A	6 (152)	5 (279)	5 (279)	11 (279)	15 (381)	7 5/8 (194)	12 (305)
CVS 275A-SI	6 (152)	5 (279)	N/A	11 (279)	15 (381)	7 5/8 (194)	12 (305)
CVS 300A	6 (152)	4 (102)	N/A	13 (330)	18 3/4 (476)	8 1/4 (210)	16 (406)
CVS 400A	6 (152)	4 (102)	N/A	13 (330)	18 3/4 (476)	8 1/4 (210)	16 (406)

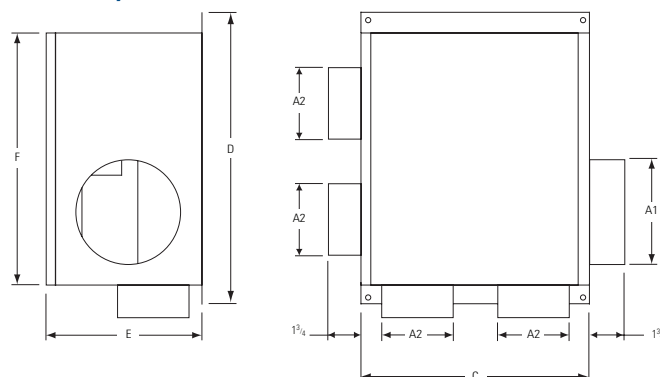
All dimensions in inches (mm).

Male duct connector is 1/8" smaller than duct size.

### CVS 275A / CVS275A-SI



### CVS 300A/ CVS 400A



## Accessories



**FC**  
Mounting Clamps



**FTD 7**  
7 Day Timer



**SCD**  
Speed Control



**WC 15**  
Speed Control

## Customer Support:

Canada 800.565.3548 • support@fantech.net • www.fantech.net

Fantech reserves the right to modify, at any time and without notice, any or all of its products' features, designs, components and specifications to maintain their technological leadership position.



**fantech**®  
a systemair company