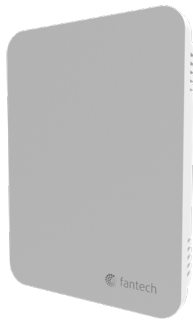




## Automatic TVOC Sensing Wall Control

Product #: 414729



Technologically advanced and feature-rich; the ECO-Feel™ provides contractors and homeowners with a higher level of confidence over indoor air quality. The ECO-Feel is preprogrammed to run continuously on ECO Mode.

### Features

- Preprogrammed to run on ECO Mode continuously
- Dedicated Total Volatile Organic Compound (TVOC) Sensor and Indoor Relative Humidity (RH) sensor.
- Targets maintaining a 45% indoor relative humidity via ventilation, when possible.
- Error code LED reduce troubleshooting time
- Absolutely no user input or configuration required to operate effectively
- Peace of mind that your home ventilation control needs are met automatically with the smart ECO Mode algorithm

### ECO Mode

The unique ECO Mode will automatically choose the best operating settings based on your home's current conditions, in order to find the right balance between good air quality and lower energy consumption. By sensing indoor Relative Humidity (RH) and outdoor incoming temperature, the control will find the right balance between good air quality and lower energy consumption.

### TVOC Sensing

This control uses a dedicated Total Volatile Organic Compound (TVOC) sensor to make sure there is extra ventilation when you need it the most, such as during cooking, cleaning, and large family gatherings. The sensor automatically takes account of the total amount of Volatile Organic Compounds in a space and adjusts the ventilation of the Fresh Air Appliance accordingly.

### External dimensions

The wall control has a dimension of 3<sup>19/64</sup>" wide x 4<sup>19/32</sup>" high x <sup>53</sup>/<sub>64</sub>" thick (84 mm x 117 mm x 21 mm).

### Communication

RS-485 Modbus

### Power

12Vdc

### Connector

4 wire screw terminal up to 18 AWG

### Plastics

Smooth matte surface finish

### Backplate

Can be mounted using screws on drywall and/or on electrical enclosure NEMA 5-15R (Residential 120Vac single enclosure).

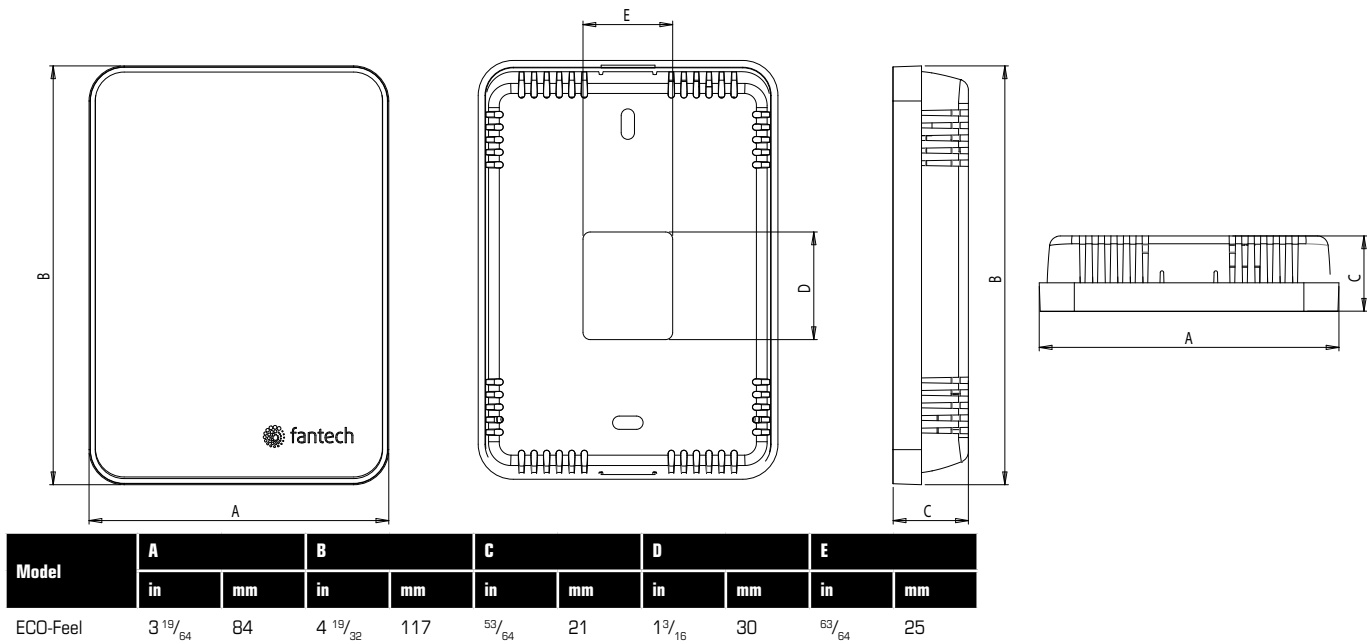
### Ventilation Mode

The ECO-Feel wall control always runs at a minimum speed of 20 mins ON/40 mins OFF per hour. Ventilate rate can be increased based on the ECO Mode smart ventilation

### Warranty

2 year warranty

## Dimensions

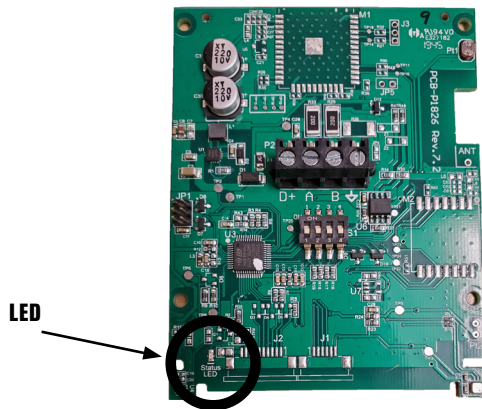


## LED Codes

Status LED Troubleshooting Codes (On back of device):

Solid **ON** LED - Device is operating correctly

**Blinking** LED - communication error, verify A and B signal wires are correct.



## Requirements and standards

- Complies with Novoclimat 2.0

## Contacts

Submitted by:		Date:
Quantity:	Model:	Project #:
Comments:		
Location:		
Architect:		
Engineer:		Contractor:

## Distributed by:

**United States** 10048 Industrial Blvd. • Lenexa, KS 66215 • 1.800.747.1762 • [www.fantech.net](http://www.fantech.net)

**Canada** 50 Kanalfakt Way • Bouctouche, NB E4S 3M5 • 1.800.565.3548 • [www.fantech.net](http://www.fantech.net)

Fantech, reserves the right to modify, at any time and without notice, any or all of its products' features, designs, components and specifications to maintain their technological leadership position.